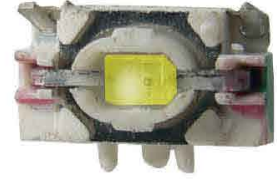


Feature :



- SPST
- Mini in dimension
- Bi-color LED illuminated available
- SMT, right angle, and vertical PCB terminal

Application :

- Consumer products
- Computer products
- Instrumentation
- Communication equipments

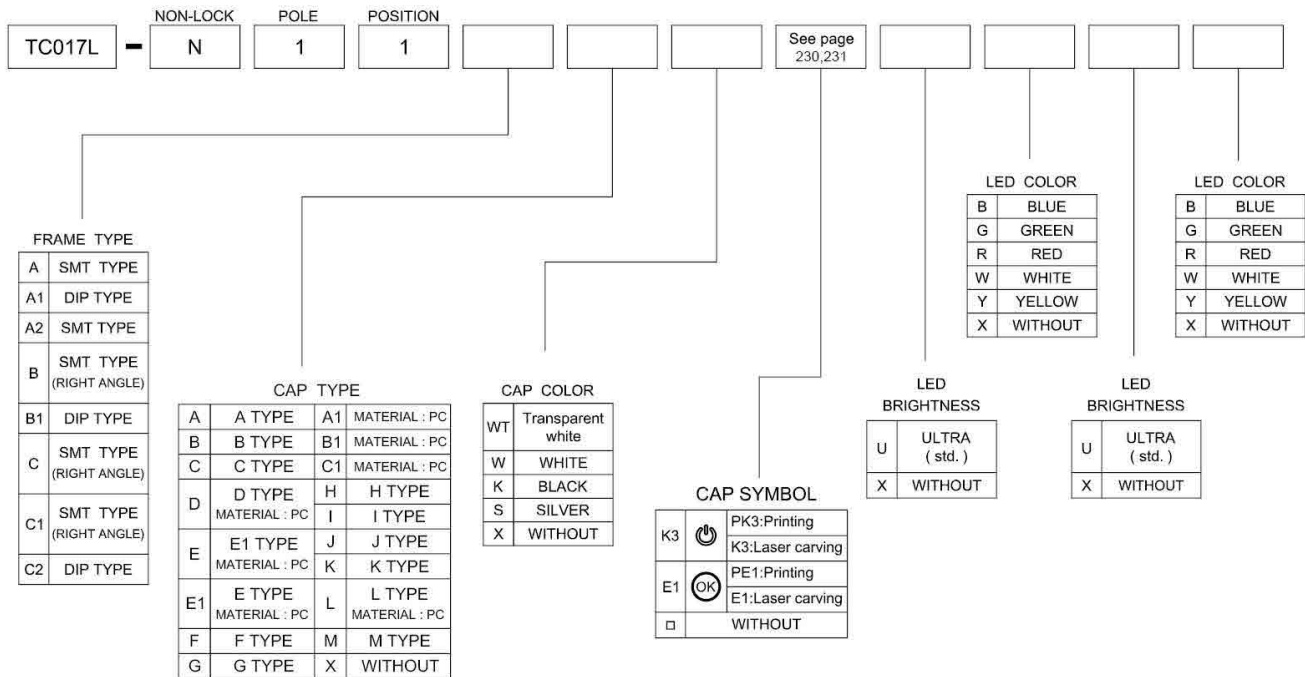


SWITCH SPECIFICATIONS	
POLE - POSITION	Momentary action , SPST
CONTACT RATING	MAX. : 12 V DC , 50 mA MIN. : 1 V DC , 50 μ A
CONTACT RESISTANCE	500 m Ω MAX. 5 V DC ; 10 mA , by Method of Voltage DROP
INSULATION RESISTANCE	100 M Ω MIN. 100 V DC for 1 minute
DIELECTRIC STRENGTH	Breakdown is not Allowable ; 250 V AC for 1 Minute
OPERATING FORCE	160 \pm 50 gf
OPERATING LIFE	100,000 cycles
OPERATING TEMPERATURE RANGE	-40°C ~ 85°C
TOTAL TRAVEL	0.2 \pm 0.10 mm

LED SPECIFICATIONS		Value / LED Color						
 ATTENTION LEDs are Electrostatic Sensitive devices 	Unit	Blue	Pure Green	Red	Yellow	Orange	Green	White
		LUMINOUS INTENSITY@20mA I _v	mcd	80	150	220	180	320
Dominant Wavelength λ_D	nm	465	525	630	590	601	567	/
FORWARD VOLTAGE@20mA V _f	V	3.3	3.2	1.95	2	2.1	2.1	3.3

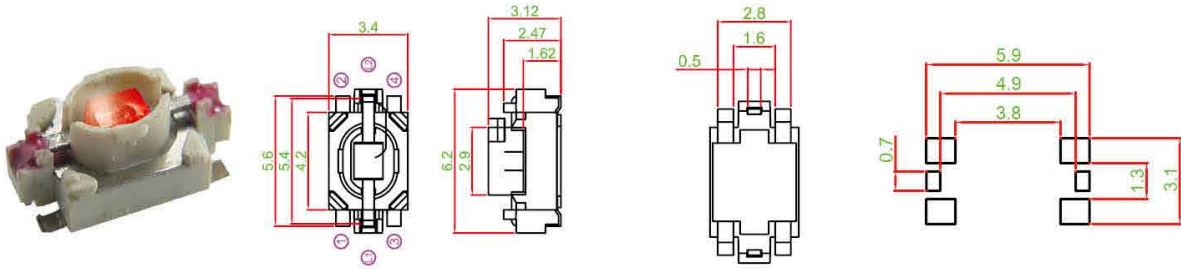
■ A single bin cannot be ordered, please contact us in advance if you need a particular bin sorting before placing your order to clarify the lead time, MOQ and pricing

HOW TO ORDER

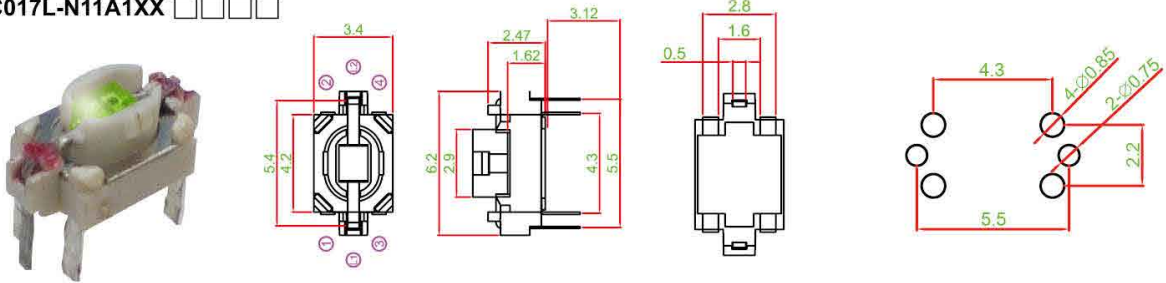


DIMENSION

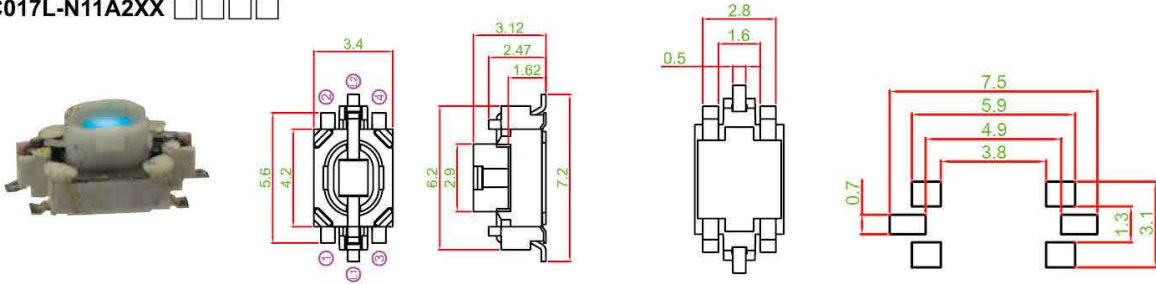
• TC017L-N11AXX □□□□



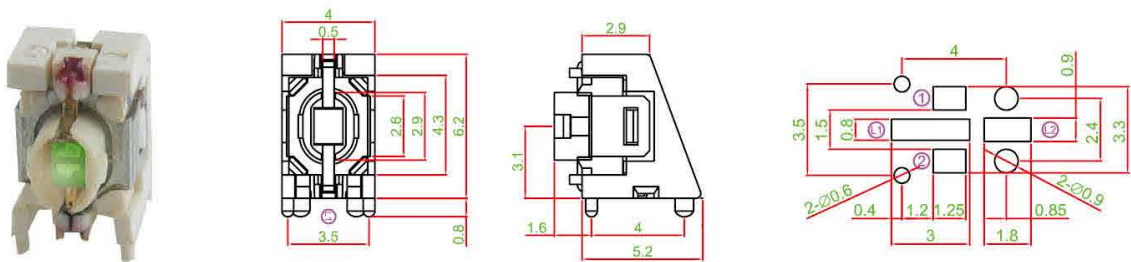
• TC017L-N11A1XX □□□□



• TC017L-N11A2XX □□□□

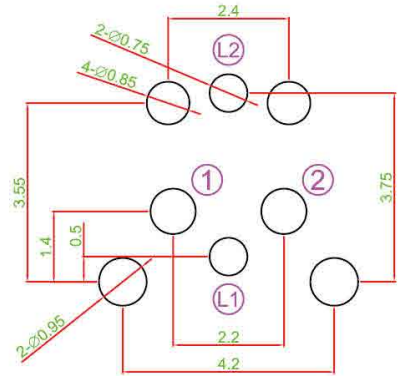
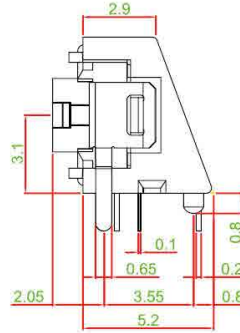
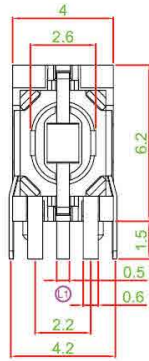


• TC017L-N11BXX □□□□

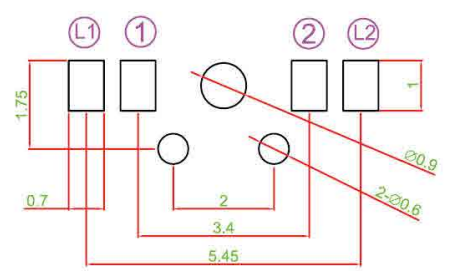
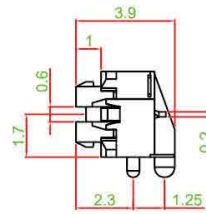
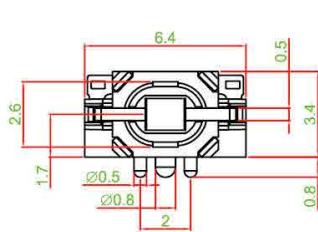
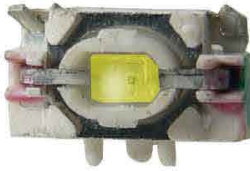


FRAME TYPE

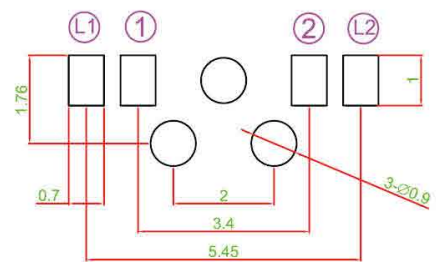
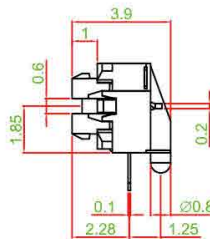
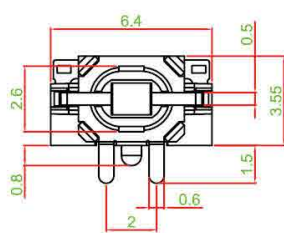
• TC017L-N11B1XX □□□□



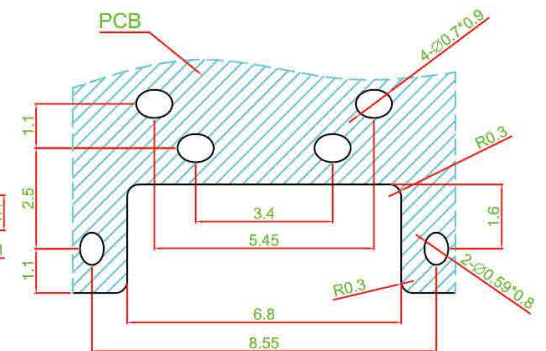
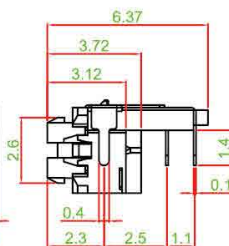
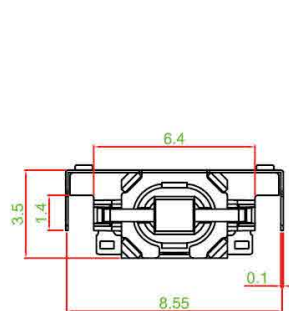
• TC017L-N11CXX □□□□



• TC017L-N11C1XX □□□□



• TC017L-N11C2XX □□□□

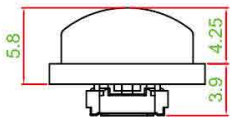
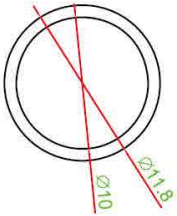


CAP TYPE

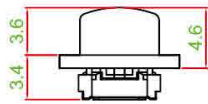
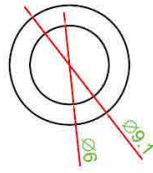
VERTICAL



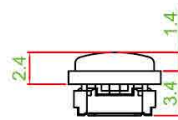
• A&A1 TYPE



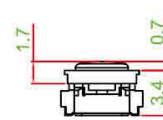
• C&C1 TYPE



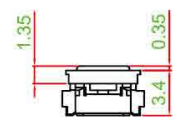
• H TYPE



• I TYPE



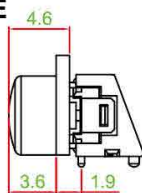
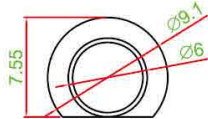
• J TYPE



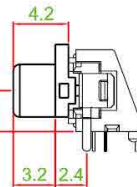
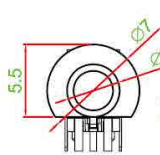
HORIZONTAL



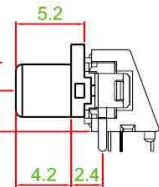
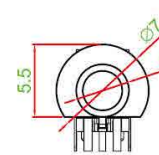
• B&B1 TYPE



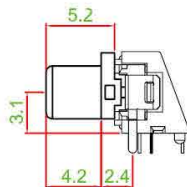
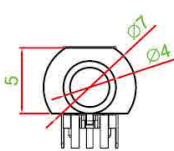
• D&F TYPE



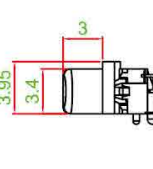
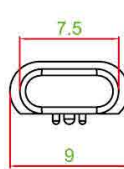
• E&G TYPE



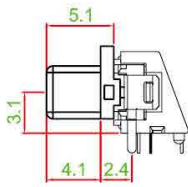
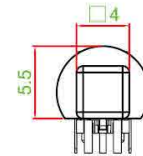
• E1 TYPE



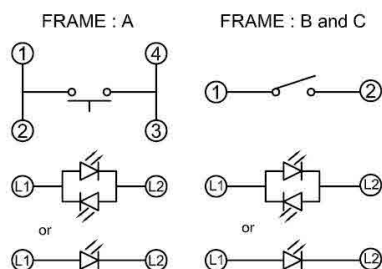
• K TYPE



• L TYPE



CIRCUIT



• M TYPE

